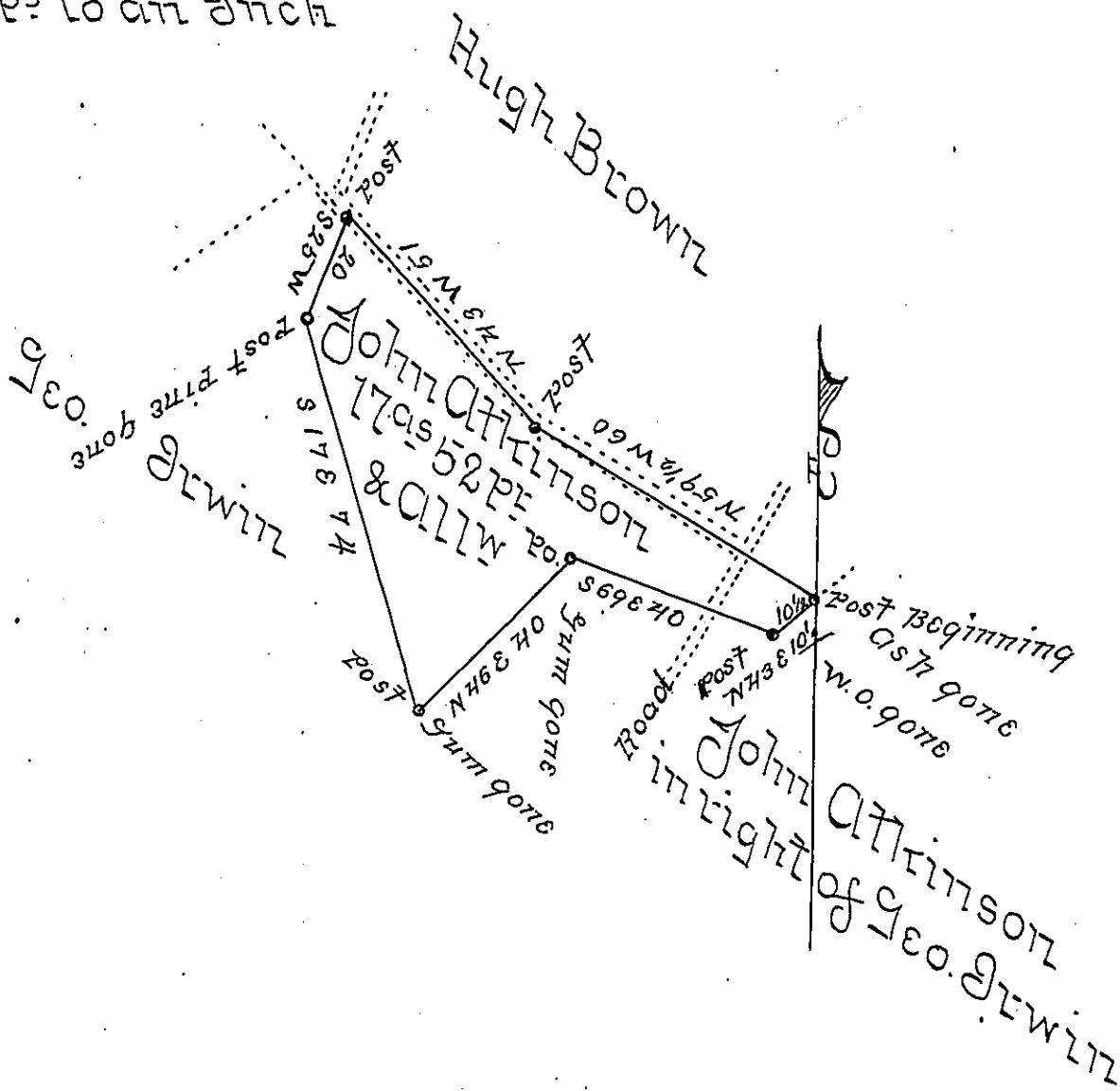


Scale 40 p^s to an Inch



A Draught of 170.52 Perches of land, with allowance of six per Cent for Roads &c Situate in Wayne Township Millersburg County Surveyed Oct. 26th 1864 in pursuance of a Warrant to John Atkinson for 16^a dated Oct 24th 1864

John R Weekes C.S.

To James P. Barr Esq }
Surveyor General of Pa }

N.B. This land is all Cleared & under Cultivation
J.R.W.

IN TESTIMONY that the above is a copy of the original remaining on file in the Department of Internal Affairs of Pennsylvania, made conformably to an Act of Assembly approved the 16th day of February, 1833, I have hereunto set my Hand and caused the Seal of said Department to be affixed at Harrisburg, this third day of November 1903.

Anna B. Brown
Secretary of Internal Affairs.